



www.INFERA-US.com

USER MANUAL

INFĒRA reserves the right to make changes to its products or specifications to improve performance, reliability, or manufacturability.

Information furnished by INFĒRA is believed to be accurate and reliable at the time of publication. However, INFĒRA assumes no responsibility for its use. No license is granted by its implication or otherwise under any patent or patent rights of INFĒRA.

No part of this document may be reproduced or transmitted in any form or by any means, electronic or mechanical, for any purpose, without the express written permission of INFĒRA. Data is subject to change without notification.

INFĒRA has patent and pending patent applications, trademarks, copyright, or other intellectual property rights covering subject matter in this document. The furnishing of this document does not give you any license to these patents, trademarks, copyrights, or other intellectual property rights except as expressly provided in any written agreement from INFĒRA. Specifications are subject to change without notice.

Contents

5 Before you Start

6 Introduction

7 How BLU Works

8 Product Description

9 Package Contains

10 Important Safety Information

11 Warning!

12–13 Precautions

14–15 Directions for Use

16 Daily Maintenance / Troubleshooting

17 Maintenance

18 Limited Lifetime Warranty

INFERA Before you Start



Before using this blue device for the first time read this User Manual.

Introduction:

The INFERA BLU device uses LED blue light therapy, combined with topical heat. This combination increases blood flow to the treated areas, while eliminating bacteria and toxins trapped under the skin.

Blue light combats skin imperfections, reaching 400 to 450 nm under the skin. The result is a refreshed complexion, that both looks and feels healthier – all without any of the side effects that can be caused by topical medications.

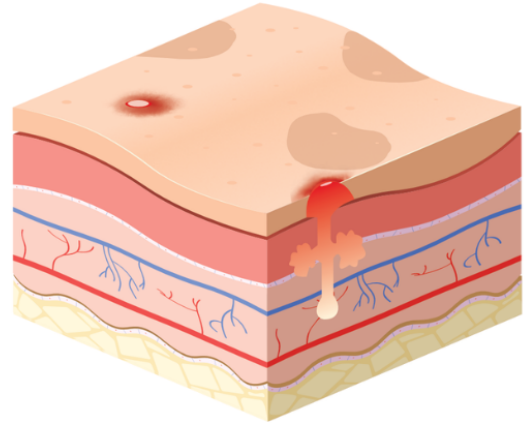
What makes BLU so special?

- Clinically proven to treat & heal acne-prone skin.
- Terminates acne-causing bacteria deep in the skin.
- Decreases breakouts on the surface of the skin.
- Stimulates microcirculation for faster healing.
- Acts as an anti-inflammatory to reduce swelling and redness.
- Balances melanin production on the skin.
- Reduces sun damage, age spots and discoloration.

How BLU Works

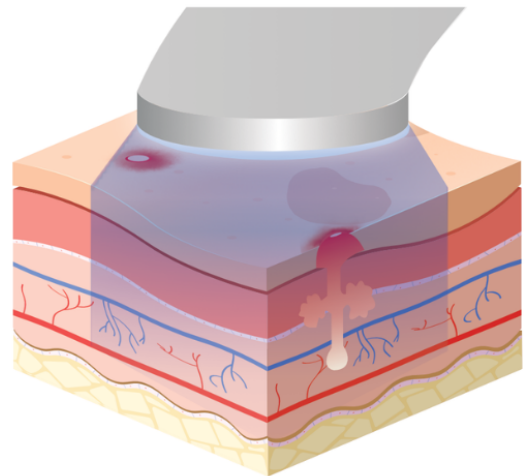
BEFORE TREATMENT

Over time, bacterial buildup under the skin leads to small raised bumps, blackheads, or cysts on the skin's surface. Additionally, trapped dirt can make pores appear larger.



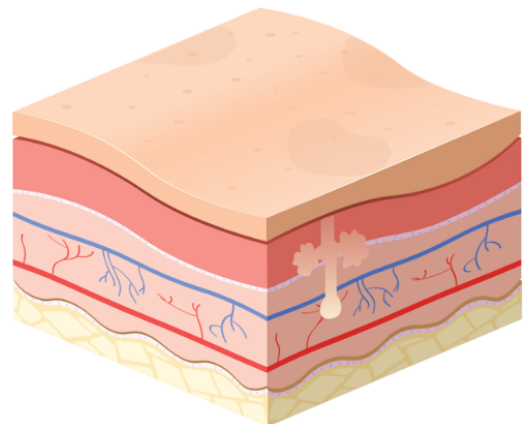
DEVICE IN ACTION

The BLU device uses a combination of blue light phototherapy and topical heat reaching all the way to the hypodermics and eliminating the bacteria trapped under the skin's surface.

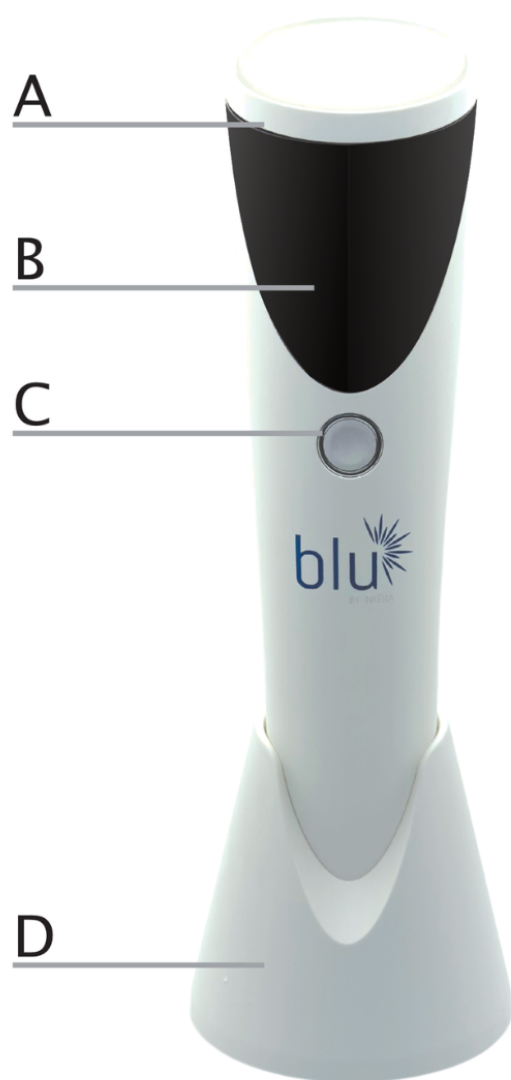


AFTER TREATMENT

The BLU device helps to reduce redness and inflammation by healing the sebaceous glands, minimizing pores, increasing the blood flow to the treated area, and providing proteins, nutrients, and oxygen to heal and improve the skin's appearance naturally. Ultimately revealing a smoother, healthier complexion.



Product Description



- A Treatment sensor probe
- B Timer and Battery Indicator
- C On/Off switch
- D Charging port | Base unit

The machine consists of a handle, an electronic control panel, 34pc 400–450 NM blue lights, and glass sensor probe. The glass sensor probe can transfer 42°C heat to deep skin.

It's a normal phenomenon if the blue light is not bright when you touch the probe for the first use, then please turn it on again. The glass head is activated by touch sensing. Heating and blue lights work at the same time.

Package Contains

- BLU light therapy device
- Charging cable
- Charging Dock
- User manual
- Warranty Card



Battery Recharging

- Make sure the device is turned off.
- Plug the charging cable to the device (with or without the charging dock), connect the other side of the cable to the charging head and connect the charging head to the electrical outlet.
- When the device is charging, the battery indicator on the digital panel will flash and you will be able to see the battery status. To fully charge, plug in the device for 3 hours, or until battery indicator shows "Battery Charged".
- Please note your BLU light device has an inactivity timer that will automatically shut the device off after 2 minutes if it is not in contact with the skin.
- The device will alert on the digital panel when battery charging is needed.

Important Safety Information

Do not use this device if:

- You are pregnant.
- You suffer from light-induced epilepsy.
- You suffer from Lupus erythematosus or Albinism.
- You have an open, bleeding or oozing skin, such as sores, sunburns, herpes simplex, wounds or rash.
- You are taking any medication that can cause photosensitivity.
- You have a condition that makes your skin especially sensitive to light, such as systemic lupus erythematosus porphyria, polymorphic light eruption, and solar urticaria.
- You have skin that is infected, burned, or cut, as this could cause discomfort or irritation.
- You are undergoing radiation or chemotherapy treatments.

Discontinue use if you encounter any discomfort or skin redness that lasts for more than two days. If you have sensitivity to light or any medical condition, it is best to consult with your doctor before using BLU.

WARNING –TO AVOID SERIOUS INJURY:

THIS DEVICE IS NOT FOR USE OVER THE EYES AND IS NOT FOR USE ON EYELIDS.

THIS DEVICE IS NOT FOR USE BY PERSONS UNDER AGE 18 YEARS OF AGE.

DO NOT USE THIS DEVICE ON AREAS OF POTENTIAL SKIN CANCER.

Important safety information

Please read the following information carefully before using your device. When using this device, basic safety precautions should be followed, as listed below. This is not an exhaustive list but will assist in ensuring your safety and will help you to maintain the lifespan of the product's warranty.

WARNING – TO REDUCE THE RISK OF ELECTRIC SHOCK THAT MAY CAUSE SERIOUS INJURY OR DEATH:

- Only use the power adapter supplied with the BLU device. Using a non-approved power supply could increase your risk of electric shock, will damage the BLU device, and void your warranty.
- Do not place in, or drop into water or any other liquid.
- Do not use the BLU device if it becomes damp or wet.
- Do not attempt to modify, open or repair your BLU device.
- Do not operate the device if it has a damaged cord or plug.
- Use the device only for its intended use and as described in this manual.

Device Check

Prior to first use, inspect your INFERA BLU device. Look for cracks in the plastic, cuts, frays or exposed wires in the power cord. If there is any noticeable damage to the cord, plug, fan, vent, applicator or outer shell, DO NOT use the device.

Contact customer service at 866-698-2181 or email info@infera-us.com.

Contact Sensor

This safety feature is designed so that the head only activates when the surface area has full contact with skin. The device will automatically shut off if the applicator is facing open air.



Precautions

Please read the product manual before using, and keep for future reference. Do NOT use this device if you have the following medical electronic devices:

- Implantable medical electronic device such as a heart pacemaker
- Life-sustaining medical electronic devices such as artificial hearts and lungs
- Electrocardiograph and other medical electronic equipment

If you use both high-frequency surgical equipment and this product on the body, the product head probe can cause burns and may also damage the device. Head probe during massage should avoid contact with open wounds. During massage, the electrode head should not be placed near the chest and heart, otherwise it will increase the risk of heart fibrillation.

This device is recommended for only one user. When cross-using this product, please clean the head probe on the device before use.

When using this device, the head probe should be tightly attached to the skin and evenly contacted.

The head probe of this product has a heat generating function, it is recommended to only use this item twice a day for 15 minutes periods. Exceeding recommended time may cause low-temperature burns.

Take the following precautions to avoid minor or moderate injury and damage to your device:

- Do not use the device if you have an active skin condition in the treatment area including sores, sunburns, herpes simples, open wounds, or a rash.
- Do not use the device on skin that is infected, burned, or cut as this could cause discomfort or irritation.
- Never look directly at the light coming from the machine applicator.
- Never use a device more than 40 minutes each time, to avoid overheating and damage to the device.

Let the device cool down for at least 30 minutes before the next use.

Precautions

Please consult your doctor before using this device if you have any of the following cases. Otherwise, an accident or physical discomfort may occur:

- Currently receiving medical treatment or if you feel abnormal
- Have an abnormal heart and brain nerves
- Fever
- Infectious disease
- Impaired skin perception or abnormal skin
- Taking medications
- Abnormal blood pressure
- Sensory sensitivity due to high peripheral circulation caused by diabetes
- Skin allergy to stainless steel electrodes

Do NOT use this device if any of these situations apply to you:

- Malignant tumors
- Bleeding tendency
- Pregnant
- Acute suppurative inflammation
- Heart pacemaker
- Metal implants

Do NOT use this device near the heart.

If you feel unwell due to use of this device, stop using it immediately and consult your doctor.

If the device placement needs to be adjusted it is recommended you do so with the power off or you might receive a strong electric shock.

Directions for Use

This device is not for use on eyelids or open eyes!

For your safety, the applicator only works when there is full skin contact and will stop automatically if it is lifted from the skin.

Step 1: Wash and clean your face.

Step 2: Lift the applicator from its cradle in the base unit. Press the On/Off switch. The device will flash once, and the timer on the digital panel will start running .

Your machine is ready for treatment.

Step 3: Place a treatment probe on the area that you want to treat first. The LED light will automatically activate. Apply light pressure while slowly moving the applicator in small circular motions as shown in the image.



The treatment probe surface temperature will slowly increase. Remove the applicator from the skin if either the skin or the applicator is too hot.

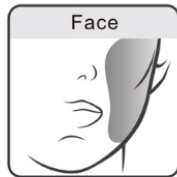
Perform the treatment for 5 – 7 minutes on each treatment area.

IMPORTANT:

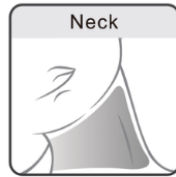
Always keep the device in motion when on your skin.

Holding it stationary while treating can cause redness or mild burn.

Directions for Use



Move gently from
chin to cheek



Gently move the
neck from bottom
to top



Move on the
forehead from
left to right

Step 4: When you're done with your treatment, turn off the applicator by pressing the On/Off switch. The device will beep once and the working indicator light on the applicator will turn off.

Step 5: Always apply a small amount of a moisturizing cream on the treated skin area after each session and massage it gently in circular motions.

Step 6: It is imperative to clean the glass probe after each use. Unplug the device from its charging base to clean it. Clean the probe thoroughly by using a dry cloth, cotton ball or paper towel. Refrain from using sanitizing substances to avoid paint damage. Only the device's glass probe is suitable for direct contact with creams and/or serums.

A mild redness—After each use you may notice a slight reddening of the skin (mild erythema) of the treated area. This is normal and should fade within 24 – 48 hours. Discontinue use if you encounter any discomfort or skin redness that lasts for longer than 48 hours.

First use: In the first month (4 weeks), use at least 3 times a week, 15 to 20 minutes each time (5 –7 minutes on each treatment area)

Daily Maintenance

When cleaning and maintaining this product, please turn off the main unit and use a damp paper towel to clean the device. Do not soak or rinse in water. During the cleaning process, water or other liquids should be prevented from entering the body of the device to avoid short circuit and leakage during use. To disinfect the device wipe a small amount of medical grade alcohol (alcohol concentration 75%) with a soft cloth.

Troubleshooting

If you encounter problems when using the product, please refer to the following tips and solutions. If the product is still in a fault state and cannot be used, please turn off the power and contact our customer service. Do not dismantle or repair the product by yourself, by doing so your products warranty will be invalidated.

Situation	Cause/Troubleshooting Method
Unable to start	Device battery is low. Charge the device. Placed the device in the charging station for 3 hours.
Does not charge	Check that the USB cable is connected properly or try charging without the dock and connect directly with the USB cable.
Weak Intensity	Adjust device position. Make sure that the device is sticking to your skin. If the device is dirty or oily, clean the surface. Increase intensity level.
Blue light is not working	Turn the device off, wait 15 seconds and turn the device back on.

Maintenance

DANGER! RISK OF ELECTRIC SHOCK

Never clean the INFĒRA or any of its parts with water or any other liquid. (only use damp wipes)

1

Always unplug the power adapter before cleaning.

2

Make sure the applicator is turned OFF. (Turn the applicator OFF by pressing and holding the control button for 2 seconds.)

3

Be sure the applicator had enough time to cool down.

4

To ensure the service life of the glass head, suggest using clean, soft cloth to clean the glass probe, make sure it is dry and clean.

Storage

Store the clean device and all its parts in a cool and dry place (away from sunlight). Your BLU device cannot tolerate an extreme change of temperature. When moved from a cold environment (under 10°C/50°F) to a warm environment, avoid use for approximately 3 hours.

- Store BLU in a safe place away from any liquids.
- Keep the power supply cord away from any type of heated surface.

IMPORTANT:

Please keep it out of reach of children, do not let minors use it.

Limited Lifetime Warranty

We offer a limited lifetime warranty for your BLU device. If your product has any manufacturing or workmanship defects, INFĒRA or its official distributors will fix or replace the device.

Warranty will NOT cover normal wear and tear of the device.

Warranty will NOT cover misuse or mistreatment of the device.

Register your new device at:

www.INFERA-US.com

To protect your new INFĒRA against any other accidental damage, please visit our store and purchase the INFĒRA Care.

www.INFERA-US.com/STORE

If your BLU infrared device is broken, damaged, in need of repair, or any other user assistance, please contact customer service:

info@infera-us.com or call 866-698-2181

Name: INFĒRA BLU Blue Light Device

Input current: 1A

Input voltage: 5V

Input power: 5W

Type of heat source and number: 34pc 400-450 LED

Design principle: Blue Light therapy +heating therapy

Therapeutic temperature range: 42C +5.5C

Wavelength: Blue LED 400-450 NM

Storage condition: Temperature: -10C -60C /14 F -140F.

Relative humidity 5% to 95%

Usage time: 5 to 7 minutes on each treatment area

Treatment area: 18 cm

Size: 51.5 /49.8 /203.5MM

Weight: 229 g

Lithium ion battery: 750 mAh



Warranty Card

▼ Fill in by customer

Name	_____	Purchase Date	_____
Phone	_____		
Address	_____		

1. The warranty scope refers to the issues with INFĒRA products, due to production, technique or quality.
2. In the following circumstances, user is responsible, even during the warranty period:
 - a) Damage due to usage, maintenance or storage not according to user manual.
 - b) Damage due to incorrect operation.
 - c) Damage due to unauthorized service, not approved by INFĒRA
 - d) Warranty card and valid purchase invoice. Must be presented.
 - e) Incorrect or altered record of warranty information.
 - f) Damage due to force majeure (such as lightning, earthquakes, fire, flood, etc.)
3. When contacting brand distributor or manufacturer for warranty repair, please present this warranty card and purchase invoice.
4. During warranty period, the manufacturer will replace the faulty part free. Shipping and handling fee is responsibility of the customer.
5. The warranty card shall be filled in clear, block letters with no alteration allowed. Please keep the warranty card. If lost, there will be no duplicate provided.
6. The final interpretation of the warranty card belongs to INFĒRA.
7. Due to product upgrade or package upgrade, the information contained in this warranty is subject to change without notice.

Contact us: INFĒRA

Email: info@infera-us.com

Phone: 866-698-2181

www.INFERA-US.com